



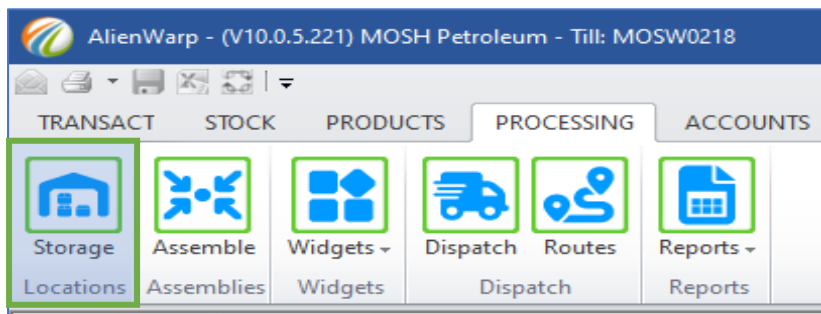
Technology From another World

ALIEN WARP[∞] HELP FILES



PROCESSING

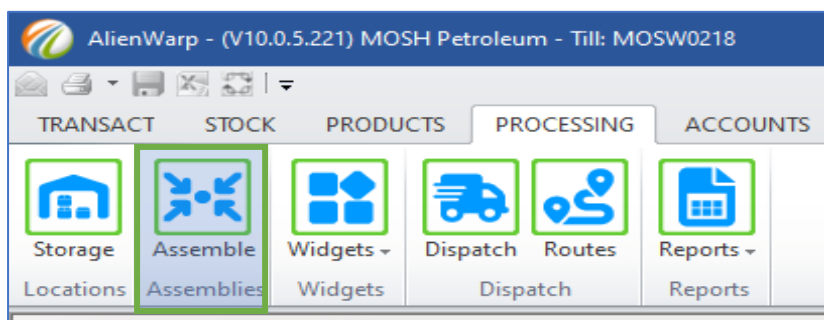
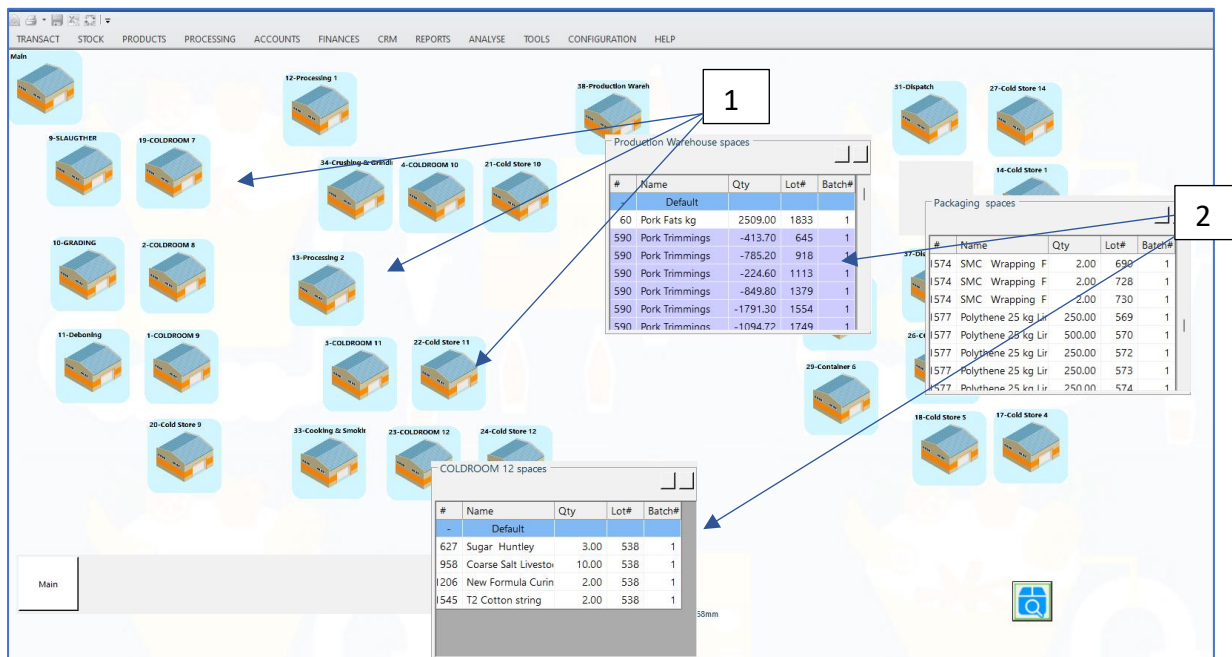
Alien WARP Processing Module



The design purpose of the Processing Module is to accommodate the management processes related to manufacturing of target products in any industry. From receiving of related raw products or components, the manufacturing and billing cycles' to dispatching of final products to the end user or supplier. All dispatched items / products are linked to specific orders from clients / suppliers and delivered via pre-defined routes to ensure safe, secure and accurate delivery with minimum risk of loss.

The Storage Manager (Setup of store locations and areas)

1. Locations and areas where raw as well as manufactured products are stored can be defined and set-up to follow the flow of the processes.
2. In addition, each location and area will when selected with "right click", reflect the available stock items at the time.



Assemble (Setting up recipes / categories & grading parameters)

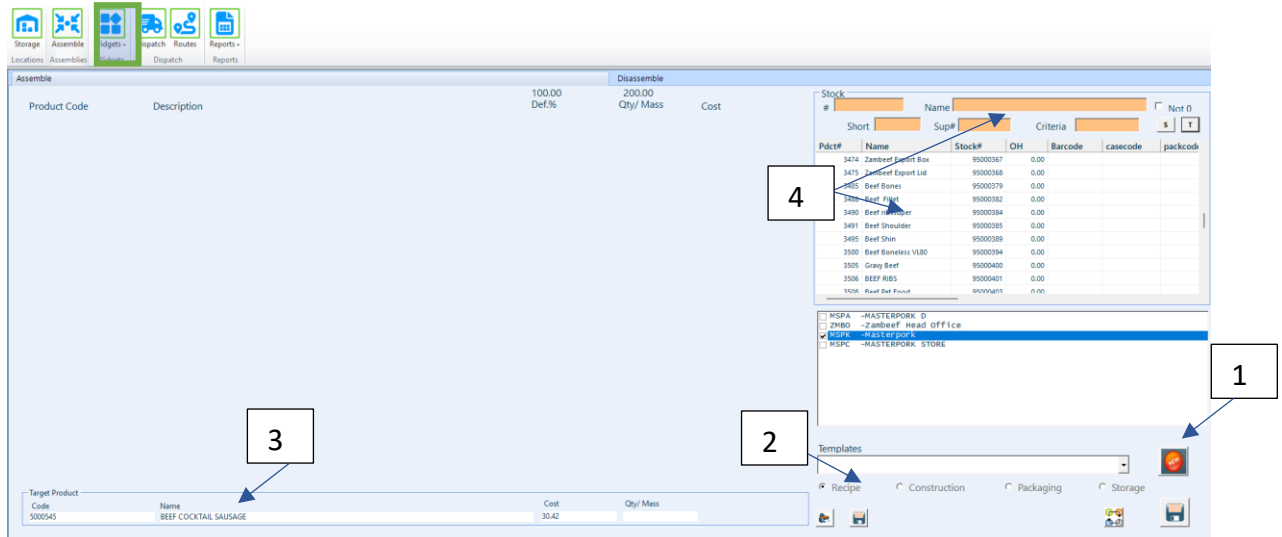
The Target product recipes (1) are compiled from the different storage areas and based on the ingredient weights, volumes and costs of the desired product in the Assemblies module. These recipes are saved as a template (screen under) to be used with the different weight of the "Target product" (the product being assembled)

Assemble		100.01	Disassemble	
Product Code	Description	Def. %	Qty/ Mass	Cost
95001811	Chicken Mdm	39.56	900	31.1793
59000246	Pork Fats	3.08	70	14.2814
95001285	Corn Maize Starch	2.20	50	15
95001747	Water	18.68	425	5
95000030	TVP Medium Soya Mince	3.08	70	50.02
95001282	Soya isolateSMCO	0.88	20	8.62
95001766	Pork Trimmings	9.67	220	5
59000420	Fat Emulsion kg	4.84	110	0.0000
95000061	Zambian Econo Russian	3.29	74.8	56.48
95000394	Beef Boneless VL80	2.64	60	91.9
95002120	Beef Fat	3.74	85	17
95001143	Chicken Trimmings	1.76	40	0.0000
95001733	Re Works	6.59	150	0.0000
95001758	Process Loss	0.00	0	5

Target Product			
Code	Name	Cost	Qty/ Mass
95002188	MP Hungarian Production Emulsion	39 220.74	2274.8

How to create a new recipe

- 1) Select the New button as well as,
- 2) The type of assembly you want to do.

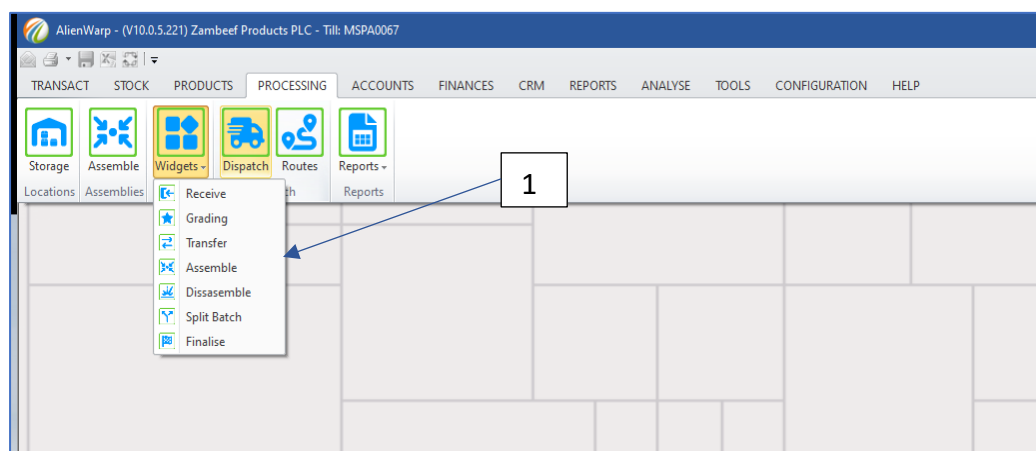


- 3) The next step is to type the name of the target product; and,
- 4) search / add the ingredients from the stock list to form the recipe. Remember to add the quantity / mass of each while adding, before you save the new recipe.

The same process applies when de-constructing a product as on the Disassemble tab

The Processing Flow by “Widgets”

The processing flow is dictated by a set of “Widgets” (1) where detail is added automatically (Scales etc) or manually, incremental and financial data is then captured, to report on, in the processing reports module as separate reports or, in the reports main module to report on multiple chains as a network.

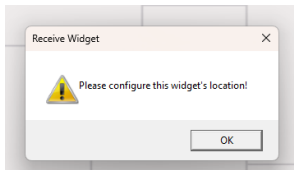


Receive Materials Widget

The Receive widget is used to capture received raw materials / products from suppliers. The locations of these widgets in the proses, must be configured see (2 & 3) to display only the

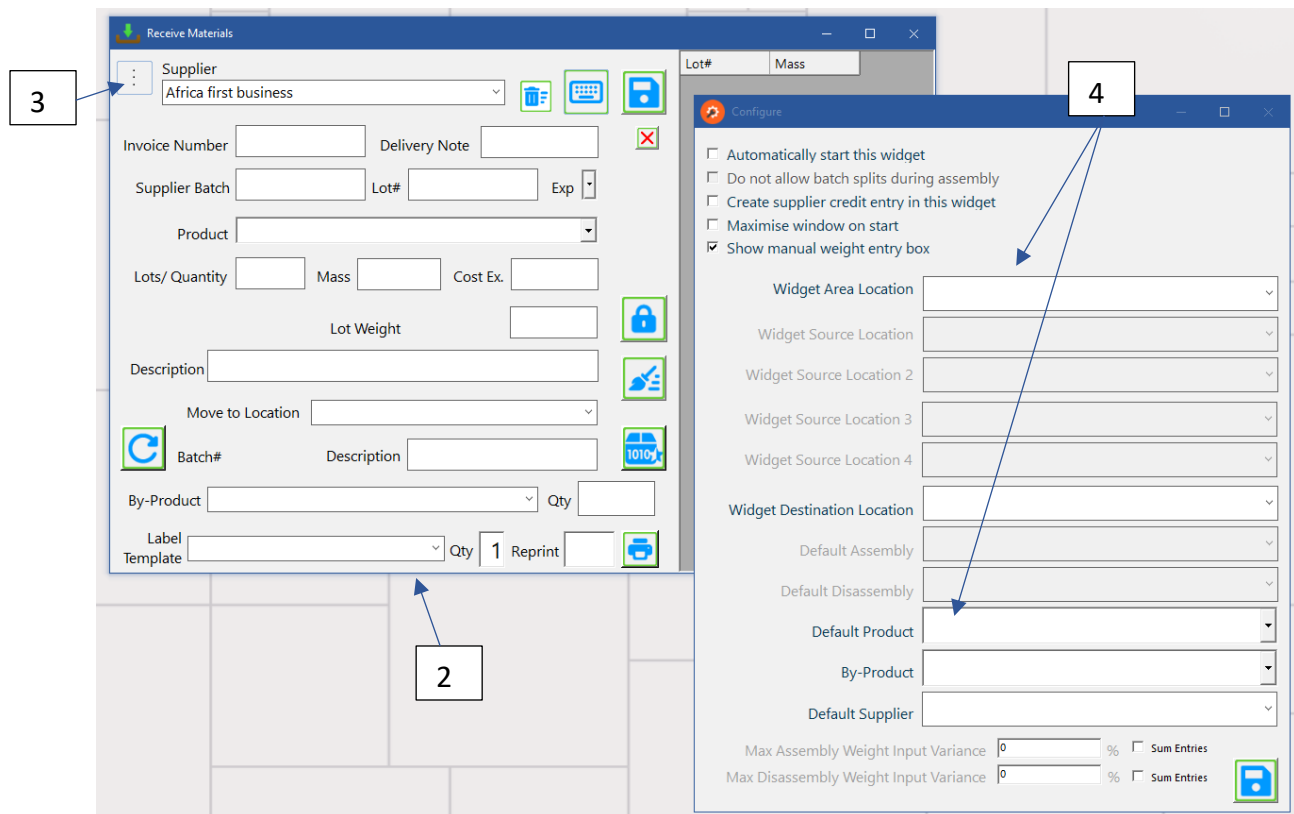
defaults selected from the various dropdown menus as well as how it will be displayed at the entry point.

To access the configure screen of the widget, select the widget tab which will display the following message.



The next screen will display all the fields of the widget which need to be completed. (2 screen below)

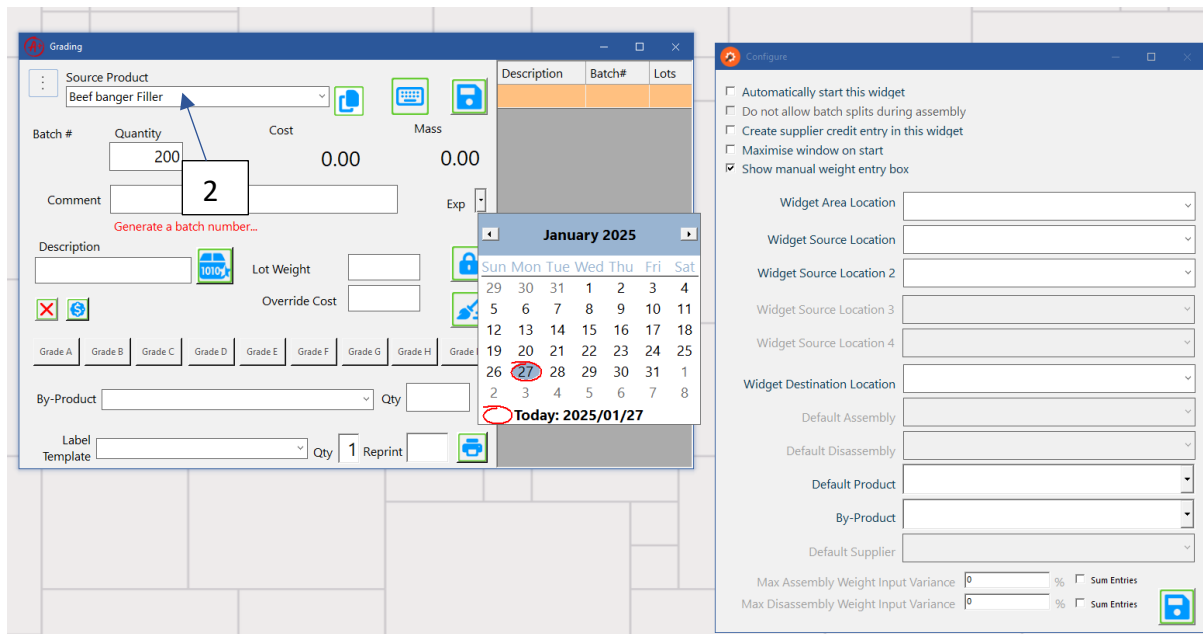
3. To assign the "area" location for the widget as well as the "Destination" location, click on the block with 3 dots at the top left of the screen to display the config screen and complete. (4)



Grading Widget

Similar to the Receiving Widget, the grading must be set-up and the location indicated. Grading of the supplied products is needed to determine final payments to supplier based on related standards, categories and options.

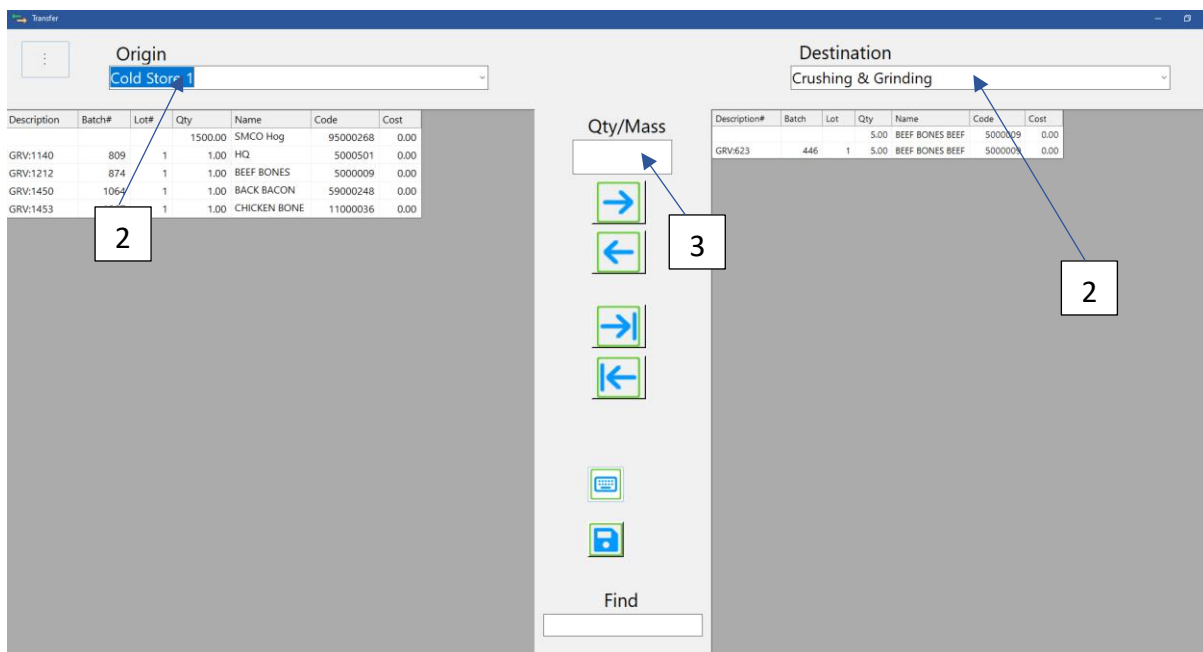
1. Select the Source Product from the dropdown list
2. Enter the quantity to be graded. A batch number will be created
3. Set expiry date



- Transfer Widget

Similar to the other Widgets, the transfer must be set-up and the location as indicated above.

1. You can select the Source Product from the dropdown list to set-up the dispatch as origin data, and,
2. Set-up the destination to where the product will be transported or moved.
3. The mass of the products can be included to calculate the variables of incremental and financial data of every transaction station or as totals.



● Disassemble Widget

1. Similar to the other Widgets, the Disassemble must be set-up for the location or division allocated to capture the data at individual stations or as part of network data analytics and reporting.
2. Enter the quantity or mass of the products and/or the packaged products to capture the disassembled products' data and to report on the data.
3. Include the disassembly batch total usable mass to capture the total mass value and increments accurately.

Product Code	Description	Mass	Def.%	Curr.%	Qty/Mass	Cost	Batch#
95000382	Beef Fillet	7.1	11.0			1 184.99	
95000429	Fillet Portion	54	83.3			11 502.00	
95000438	Beef Cubes	1.9	2.9			241.11	
95000394	Beef Boneless VL80	1.8	2.8			198.47	
9500	Process Loss	0				5.00	

4. Assemble Widget

1. Similar to the other Widgets, the Assemble must be set-up for the location or division allocated to capture the data at individual stations or as part of network data analytics and reporting.
2. Enter the quantity or mass of the products and/or the packaged products to capture the disassembled products' data and to report on the data.
3. Include the assembly batch/lot reference numbers/names to identify the batch information when doing quality control, scheduling transfers, packaging or, when generating reporting on assembled goods.

Product Code	Description	Qty/Mass	Def.%	Curr.%	Mass	Cost	Batch/Lot
95001766	Pork Trimmings	7	46.67			525.00	
95002120	Beef Fat	4	26.67			68.00	
95000113	Water	3	20.00			1.50	
95000007	Beef Sausage Supreme	1	6.67			55.63	
95001758	Process Loss	0				0.00	

5. Split Batch Widget

1. Similar to the other Widgets, the Split Batch must be set-up for the location or division allocated to capture the data at individual stations or as part of network data analytics and reporting.
2. Select from the dropdown source product window the source product you want to split, then enter the location to where the products and/or the packaged products will be transferred.
3. Enter the quantity of split batches.
4. Enter the label name to automatically create the label template.

The screenshot shows the 'Split Batch' window. It contains several input fields and a table. Numbered callouts indicate the following fields:

- 1**: Source Product dropdown
- 2**: Move to Location dropdown
- 3**: Quantity input field
- 4**: Label Template dropdown

Other visible fields include: Src.Batch/, Src.Weight (0.00), Split (0.00), Quantity (0.00), Cost (0.00), Lot Weight (0.00), and Qty (1). A table with multiple columns is visible on the right side of the window.

Finalizing the product and readying the goods for Dispatching

Orders

The screenshot shows the 'Orders' window. It features a top navigation bar with various icons. Numbered callouts indicate the following elements:

- 1**: Dispatch button in the logistics group
- 2**: Date From dropdown (set to 01 June 2024)
- 3**: Date To dropdown (set to 16 July 2024)
- 4**: Client Ref input field
- 5**: Chain dropdown (set to All chains)

The main area displays a table of orders with columns: Internal Order#, Client, Order# Code, Created Unit, Delivery, Ordered, Dispatch, Staff, and Comment. The table lists several orders, including Tyre Replacement, Trans Oil, Diesel S0PPM, and Diesel S0PPM.

- 1) Click on the Dispatch button in the logistics group and then select the "Orders" tab and select the dates.
- 2) A list of orders will be displayed depending on your selection "incomplete / complete/ cancelled.
- 3) You also have an option to select internal orders to be included amongst others.

- 4) You may also search via client reference / client order number/ supplier /or allocated order number.
- 5) Before clicking on the RUN button, make sure the chain and route is selected.

Dispatch

Orders Picklists Finalise Trips Report

Date From: 01 June 2024 To: 16 July 2024

Order date Delivery Date

Include internal orders Show incomplete orders Show completed orders Show cancelled orders Show onhand figures Show picked items Show authorised only

Client Ref Client Order Supplier Order #

Chain: All chains Routes: All routes

Auth	Internal Order#	Client	Order#	Created	Delivery	Ordered	155.00	Staff	Comment
<input checked="" type="checkbox"/>	#3 082 (NCIO49)	Company Abc	2000011000	2024/07/10	2024/07/10 14:11	100.00	100.00	Admin Support	Deliver to Tlokeng Depot
<input checked="" type="checkbox"/>	Diesel 50PPM		10000101	/liter		100.00		Admin Support	Deliver to Tlokeng Depot
<input checked="" type="checkbox"/>	#3 090 (NCIO50)	2 december logistics	2000011026	2024/07/11	2024/07/11 11:28	55.00	55.00	Admin Support	Test
<input checked="" type="checkbox"/>	Diesel 50PPM		10000101	/liter		55.00			Test

Pick list

- 6) Tick the specific order in the authorization box as well as the picklist box to add the order to a picklist. Save when done.
- 7) Now select the "Picklist" tab. A list of the orders on the picklist will be displayed.
- 8) Once saved, a picklist number is assigned to the order number and comments displayed.

Dispatch

Orders Picklists Finalise Trips Report

Date From: 01 July 2024 To: 16 July 2024

Order date Delivery

Group by: Show dispatch items Group by product

Picklist #

Add Logo Add Signature

Grid size: Small Medium Large

Create Pick Lists Pick list summary

Routes: All routes

Picklist #: 18

Order No	Client	Delivery	155.00	Picklist	Order#	Comment
#3 082 (NCIO49)	Company Abc	2024/07/10 14:11	100.00	<input checked="" type="checkbox"/>	2000011000	Deliver to Tlokeng Depot
Diesel 50PPM	10000101	/liter	100.00	<input checked="" type="checkbox"/>		Deliver to Tlokeng Depot
#3 090 (NCIO50)	2 december logistics	2024/07/11 11:28	55.00	<input checked="" type="checkbox"/>	2000011026	Test
Diesel 50PPM	10000101	/liter	55.00	<input checked="" type="checkbox"/>		Test

- 9) The next step is to finalize the list on the Finalize tab.

Dispatch

Orders Picklists Finalise Trips Report

Date From: 01 July 2024 To: 22 July 2024

Order date Delivery date

Picklist #: 18

Supplier

Grid size: Small Medium Large

Routes: All routes

Order No	Client	Supplier	Delivery	155.00	Price	Picked#	Parcels	155.00	Charge	ClientOrd#	Client
#3 082 (NCIO49)	Company Abc	NCI Botswana (Pty) Ltd	2024/07/10 14:11	100.00	1 350.00			100.00	<input checked="" type="checkbox"/>	18	Del
Diesel 50PPM		10000101	/liter	100.00	13.50			100.00	<input checked="" type="checkbox"/>	20	Del
#3 090 (NCIO50)	2 december logistics	NCI Botswana (Pty) Ltd	2024/07/11 11:28	55.00	742.50			55.00	<input checked="" type="checkbox"/>	18	Del
Diesel 50PPM		10000101	/liter	55.00	13.50			55.00	<input checked="" type="checkbox"/>	18	Tes

Finalize

- 10) The list of orders will be displayed
- 11) These orders must now be charged to the accounts – Tick the "Charge" boxes and select "all routes" from the dropdown and click the Charge Button.

Trip (Delivery Schedule)

- 12) Once approved, a trip needs to be compiled and allocated to a route. Select the Trip button. A delivery schedule will be displayed.
- 13) The schedule can be printed after the details on Odo in / out trip nr etc. are captured and displayed.

12 / 13

Routes

- 14) To design a route. Click on the route button and select the clients/suppliers/chains / Regions and Locations served on specific routes.

14

- 15) Once the route is compiled, you can view all routes as well as the clients and address of the delivery location.

Available Reports

15

1. Intake Report

1. Select the to and from dates, including the times to generate a report for that period.
2. Enter the batch number and select the supplier in the supplier dropdown menu, select the grouping and listing options you want to include in the report.
3. Select the add logo selection block to include your pre-loaded company logo in the Forms sub-module.

Supplier	Month	Product	QTY	Mass	AvgMass	Price/Kg	Value	Contrib%
Blessings Nyirenda (BLE010)	1/2025	Graded pigs PRIMAL PORKER	24	1 420.60	59.19	59.00	83 815.40	2.67
Blessings Nyirenda (BLE010)	1/2025	Graded pigs SOW	1	115.60	115.60	30.00	3 468.00	0.22
Chanda Christopher (CHA025)	1/2025	Graded pigs Baconer	18	1 367.40	75.97	62.00	84 778.80	2.57
Chanda Christopher (CHA025)	1/2025	Graded pigs PRIMAL PORKER	7	432.80	61.83	59.00	25 535.20	0.81
Charles Malama (CHA015)	1/2025	Graded pigs Porker Small	4	148.80	37.20	52.00	7 737.60	0.28
Charles Malama (CHA015)	1/2025	Graded pigs Porker	9	422.00	46.89	54.00	22 788.00	0.79
CHISHALA KAWESHA (KAW006)	1/2025	Graded pigs Baconer	39	3 019.40	77.42	62.00	187 202.80	5.68
CHISHALA KAWESHA (KAW006)	1/2025	Graded pigs PRIMAL PORKER	1	61.80	61.80	59.00	3 646.20	0.12
Daveyard farm (dav017)	1/2025	Graded pigs Porker Small	2	75.00	37.50	52.00	3 900.00	0.14
Daveyard farm (dav017)	1/2025	Graded pigs Baconer	9	645.00	71.67	62.00	39 990.00	1.21
Daveyard farm (dav017)	1/2025	Graded pigs Porker	2	92.20	46.10	54.00	4 978.80	0.17
Daveyard farm (dav017)	1/2025	Graded pigs PRIMAL PORKER	7	420.40	60.06	59.00	24 803.60	0.79
eMthunzini farm limited (emt001)	1/2025	Graded pigs Porker Small	6	218.20	36.37	52.00	11 346.40	0.41
eMthunzini farm limited (emt001)	1/2025	Graded pigs Baconer	7	530.80	75.83	62.00	32 909.60	1.00
eMthunzini farm limited (emt001)	1/2025	Graded pigs Porker	26	1 191.20	45.82	54.00	64 324.80	2.24
eMthunzini farm limited (emt001)	1/2025	Graded pigs PRIMAL PORKER	11	645.40	58.67	59.00	38 078.60	1.21
flamboyant estate ltd (ft0022)	1/2025	Graded pigs Baconer	10	746.00	74.60	62.00	46 252.00	1.40
flamboyant estate ltd (ft0022)	1/2025	Graded pigs Porker	17	841.60	49.51	54.00	45 446.40	1.58
flamboyant estate ltd (ft0022)	1/2025	Graded pigs PRIMAL PORKER	13	754.80	58.06	59.00	44 533.20	1.42

2. Grading Report

1. Select the to and from dates, including the times to generate a report for that period.
2. Enter the batch number and select the supplier in the supplier dropdown menu, select the grouping and listing options you want to include in the report.
3. Select the add logo selection block to include your pre-loaded company logo in the Forms sub-module, select the add signature selection box to include a signature that was pre-loaded digitally in the Tools module.

Code	Grade	Mass Final	Qty	Mass Out	Price/Kg	Value	AvgMass	Contr%
95001753	Graded pigs Baconer	53 138.80	39	3 019.40	62.00	187 202.80	77.42	97.99
95001770	Graded pigs PRIMAL PORKER		1	61.80	59.00	3 646.20	61.80	2.01
Daveyard farm	dav017	Batch#1972	2025/01/08 GRV:2546 INV:1842580	20.00	1 232.60	73 672.40	61.63	100.00
eMthunzini farm limited	emt001	Batch#1831	2025/01/02 GRV:2379 INV:1913886-A	50.00	2 585.60	146 659.40	51.71	100.00
flamboyant estate ltd	ft0022	Batch#1956	2025/01/07 GRV:2536 INV:383107	40.00	2 342.40	136 231.60	58.56	100.00
James Nhlema	NHL001	Batch#1973	2025/01/08 GRV:2547 INV:1842579	52.00	2 596.80	142 254.20	49.94	100.00
95001777	Graded pigs Porker		45	2 191.40	54.00	118 335.60	48.70	84.39
95001770	Graded pigs PRIMAL PORKER		7	405.40	59.00	23 918.60	57.91	15.61
Jean sengiyaremye damascene	jea005	Batch#2017	2025/01/10 GRV:2596 INV:302492	65.00	5 615.60	348 167.20	86.39	100.00
95001753	Graded pigs Baconer		65	5 615.60	62.00	348 167.20	86.39	100.00
Kapili Moono	Kap013	Batch#1832	2025/01/02 GRV:2380 INV:301224-M	20.00	1 464.20	89 855.20	73.21	100.00
95001753	Graded pigs Baconer		15	1 155.80	62.00	71 659.60	77.05	78.94
95001770	Graded pigs PRIMAL PORKER		5	308.40	59.00	18 195.60	61.68	21.06
Lawrence Zulu	LAW001	Batch#1953	2025/01/07 GRV:2533 INV:378742	13.00	649.20	36 593.20	49.94	100.00
95001750	Graded pigs Porker Small		3	103.80	52.00	5 397.60	34.60	15.99
95001753	Graded pigs Baconer		2	140.00	62.00	8 680.00	70.00	21.57
95001777	Graded pigs Porker		6	280.60	54.00	15 152.40	46.77	43.22
95001770	Graded pigs PRIMAL PORKER		2	124.80	59.00	7 363.20	62.40	19.22
Lezanguupa daniel general deale LEZ001	Batch#1954	2025/01/07 GRV:2534 INV:302473	65.00	4 855.00		300 434.60	74.69	100.00

3. Mass Loss Report

1. Select the to and from dates, including the times, to generate a report for that period.
2. Enter the batch number and select the supplier in the supplier dropdown menu, select the grouping and listing options you want to include in the report.
3. Select the add logo selection block to include your pre-loaded company logo in the Forms sub-module.

Mass Loss Report - Grading

Supplier	Date	Invoice#	SuppBatch#	SuppCode
Totals:				
Mass:			0.00	Cost: 0.00
Loss:			0.00	Loss: 0.00
Total:			0.00	Total: 0.00
Yield:				

4. Disassembly Report

1. Select the to and from dates, including the times to generate a report for that period.
2. Enter the batch number and select the supplier in the supplier dropdown menu, select the grouping and listing options you want to include in the report.
3. Select the add logo selection block to include your pre-loaded company logo from the Forms sub-module, select the add signature selection box to include a signature that was pre-loaded digitally in the Tools module.

Disassembly Summary Report

Target Name	Unit	Code	Mass	Cost	CostTotal
Totals:					
Mass:			0.00	Cost: 0.00	
Loss:			0.00	Loss: 0.00	
Total:			0.00	Total: 0.00	
Yield:					

5. Assembly Report

1. Select the to and from dates, including the times, to generate a report for that period.
2. Select the assembly in the assembly dropdown menu and enter the batch number in the window below.
3. Select the assembly type to be included in the report.

Storage Report

Timestamp From: 01 January 2025 To: 29 January 2025

Supplier: All

By Batch: ☐ Lot No: ☐

Code: Batch#:

Group products: All Areas

Area	Space	Supplier	ShortCode	Stock#	BarCode	BatchNo	Label Name	Qty	M	Cost	Price
COLDROOM 11	Default	Patricia Mumba		002208		1741	Graded pigs Small			0.00	0.00
COLDROOM 11	Default	Stephen Chitete		002208		1829	Graded pigs Small			0.00	0.00
COLDROOM 11	Default	Rachael C mukuka	0	95002208		2006	Graded pigs Small			27.20	816.00
COLDROOM 11	Default	Rachael C mukuka	0	95002208		2006	Graded pigs Small			28.60	858.00
COLDROOM 11	Default	Rachael C mukuka	0	95002208		2006	Graded pigs Small			29.40	882.00
COLDROOM 13	Default	Master Pork	0	70050339		1892	long life milk pc-pc-240	384.00		0.00	9 600.00
COLDROOM 13	Default	Master Pork	0	95000441		1892	Boneless C BE-DB-503		3 641.50	0.00	236 697.50
COLDROOM 13	Default	Master Pork	0	95000457		1248	Beef Tongue BE-OF-001		7.00	0.00	253.40
COLDROOM 13	Default	Master Pork	0	95000545		1876	Chicken Skin	-24.80		-570.40	-496.00
COLDROOM 8	Default	Debbies Hog Farm LTD	0	95001407		1862	Pork Trotters		69.80	25.60	2 087.02
COLDROOM 8	Default	eMthunzini farm limited	0	95001407		1862	Pork Trotters		69.80	25.60	2 087.02
COLDROOM 8	Default	Kabila Ilunga	0	95001407		1862	Pork Trotters		69.80	25.60	2 087.02
COLDROOM 8	Default	Maseka farm	0	95001407		1862	Pork Trotters		69.80	25.60	2 087.02
COLDROOM 8	Default	Misheck obumba	0	95001407		1862	Pork Trotters		69.80	25.60	2 087.02

8. Storage Loss Report

1. Select the to and from dates, including the times, to generate a report for that period.
2. Enter the batch number in the batch number entry window.
3. Select the supplier from the supplier dropdown window.

Storage Loss Report

From: 01 January 2025 00:00:01 To: 29 January 2025 23:59:59

Batch Number:

Supplier: All

BatchNo	Supplier	Stock#	Date	LotNo	Qty	TotQty	TotMass	TotCost
1832	Kapili Moono		2025/01/02 08:34	20	20.00	1 464.20	5.20	
1830	Chanda Christopher		2025/01/02 08:20	25	25.00	1 870.20	4.00	
1834	Blessings Nyirenda		2025/01/02 08:44	40	40.00	2 535.80	140 072.60	
1829	Stephen Chitete		2025/01/02 07:55	10	10.00	379.80	9 137.20	
1873	Charles Malama		2025/01/03 07:22	13	13.00	715.80	30 525.60	
		95001750	Graded pigs	1	1	39.4000	2 048.80	
		95001750	Graded pigs	2	1	36.6000	1 903.20	
		95001777	Graded pigs	3	1	48.6000	2 624.40	
		95001777	Graded pigs	4	1	50.2000	2 710.80	
		95001777	Graded pigs	5	1	53.8000	2 905.20	
		95001750	Graded pigs	6	1	34.6000	1 799.20	
		95001750	Graded pigs	7	1	38.2000	1 986.40	
		95001777	Graded pigs	8	1	53.0000	2 862.00	
		95001777	Graded pigs	9	1	43.8000	2 365.20	
		95001777	Graded pigs	10	1	41.8000	2 257.20	
		95001777	Graded pigs	11	1	42.0000	2 268.00	
		95001777	Graded pigs	12	1	40.8000	2 203.20	
		95001777	Graded pigs	13	1	48.0000	2 592.00	
1871	CHISHALA KAWESHA		2025/01/03 07:20	40	40.00	3 239.20	190 849.00	
		95001753	Graded pigs	1	1	78.0000	4 836.00	
		95001753	Graded pigs	2	1	77.8000	4 823.60	

9. Supplier Reconciliation Report

1. Select the to and from dates, including the times, to generate a report for that period.
2. Enter the batch number in the batch number entry window.
3. Select the supplier from the supplier dropdown window.

frmSupplierRecon

From 01 January 2025 00:00:01 To 29 January 2025 23:59:59 Batch Number Supplier All

Supplier Code	Supplier	BatchNo	SuppBatchNo	Stock#	Name	TotQty	TotMass	3
Date	BatchNo					Qty	Mass	value
Kap013	Kapili M	1				20.00	1 464.20	89 855.20
CHA025	Chanda C				2	25.00	1 800.20	110 314.00
2025/01/02 08:20			1830	1825	95000377 Graded pigs	25.00	1 800.20	110 314.00
BLE010	Blessings Nyirenda					40.00	2 440.80	140 072.60
	Stephen Chitete					10.00	244.80	9 137.20
2025/01/02 07:55			1829	1828	95000377 Graded pigs	10.00	244.80	9 137.20
CHA015	Charles Malama					13.00	570.80	30 525.60
2025/01/03 07:22			1873	1866	95000377 Graded pigs	13.00	570.80	30 525.60
KAW006	CHISHALA KAWESHA					40.00	3 081.20	190 849.00
pur002	Pure-nard teen challenge					116.00	5 610.80	307 297.00
2025/01/07 14:10			1955	1947	95000377 Graded pigs	116.00	5 610.80	307 297.00
LEZ001	Lezanguupa daniel general dealers					65.00	4 855.00	300 434.60
2025/01/07 13:59			1954	1948	95000377 Graded pigs	65.00	4 855.00	300 434.60
MAB012	MABINGO FARM					20.00	1 399.60	85 673.00
2025/01/07 13:49			1952	1949	95000377 Graded pigs	20.00	1 399.60	85 673.00
LAW001	Lawrence Zulu					13.00	649.20	36 593.20
2025/01/07 13:51			1953	1950	95000377 Graded pigs	13.00	649.20	36 593.20
ft0022	flamboyant estate ltd					40.00	2 342.40	136 231.60
2025/01/07 14:15			1956	1951	95000377 Graded pigs	40.00	2 342.40	136 231.60
MIT002	Telasi Miti					20.00	1 662.20	83 095.60
2025/01/08 08:02			1961	1959	95000377 Graded pigs	20.00	1 662.20	83 095.60
dav017	Daveyard farm					20.00	1 232.60	73 672.40

10. Yields Report

1. Select the to and from dates, including the times, to generate a report for that period.
2. Select the assembled and disassembled goods from the assembly and disassembly dropdown menu.
3. Select the grouping criteria to include in the report.
4. Select the supplier from the supplier dropdown window.
5. Select add a logo to include your pre-loaded logo in the tools module.

Yields Report

From 01 January 2025 00:00:01 To 29 January 2025 23:59:59 Disassemblies Baconers set 2 yields Assemblies Beef Hungarian Emulsion Batch Lot Supplier All

Yields Report Grouped

QTY MassIn MassFinal Loss 4 Cost Cost 5

1 2 3